



BRANDED APPAREL CATALOGUE





BRANDED APPAREL ORDER FORM

Date: _____

Employee Name: _____ Branch: _____

	Style Number	Colour	Size	Quantity	Amount
1					
2					
3					
4					
5					
6					
7					
8					
9					
10	\$50 gift card for steel toe boots				
Total (logo included. Taxes extra.)					

Orders made every 15th of the month for estimated delivery on the 30th.

No Style Substitutions Allowed.

The company logo is mandatory and must be embroidered on all upper body garments on left breast. The company log is mandatory on front middle of cap and toque and the width end of the scarf. Send signed and completed form to Rachelle at Reception (Email: info@clarkfreightways.com, Fax: 604-472-2137). Orders will be put in truck mail to the employee's branch.

New Employee \$100 Clark Voucher (Valid for 3 months) ☐ Employee Payroll Deduction ☐

*Note: If order exceeds \$100 voucher, employee agrees to pay the difference.

Employee Signature: _____

Authorized Supervisor/Manager for \$100 Voucher: _____

Print

Signature

Gildan Heavy Blend Full zip Hooded Sweatshirt - \$29.95



50% Cotton/ 50% polyester preshrunk 13.5 oz. Air jet yarn= softer feel and no pilling. Unlined hood with color-matched flat drawstring. YKK metal zipper. Overlapped fabric across zipper allows full front printing. Pouch pockets. Three needle topstitched hood, pocket opening and waistband. Double needle cuffs. 1X1 athletic rib with spandex. Quarter-turned to eliminate center crease.

Adult sizes: S, M, L, XL, 2XL, 3XL

Style # 18600

Colour: Black, Grey, Forest Green, Navy

HEAVY BLEND HOODED MENS/WOMANS SWEATSHIRT - \$24.95



50% Cotton /50% polyester preshrunk 13.5 oz. Double-lined hood. Drawstring at neckline. Double-needle hood, shoulder, and armhole seams. Double-needle cuffs, pouch pocket, and banded bottom. Set-in sleeves. Quarter-turned body. 1X1 Athletic rib with Lycra®.

Adult sizes: S, M, L, XL, 2XL, 3XL

Style # 18500

Colour: Black, Grey, Forest Green, Navy

STORMTECH PHOENIX H2X-DRY® POLO - \$29.95

Men's



Women's



Classic, solid design and lightweight, this H2X-DRY® performance polo features a 3-button placket, durable rib-knit tailored collar, and side hem slits for maneuverability.

- STORMTECH H2X-DRY® Moisture Management
- Mechanical Stretch
- 3-Button Placket, 1 X 1 Rib Knit Collar, Set-In Sleeves, Side Hem Slits
- Double Needle Stitching at Cuff and Hem
- 100% Full Dull Polyester with Permanent H2X-DRY® Moisture-Wicking
- 4.28oz. (USA)/ 145g (CDN)

Men's sizes: S, M, L, XL, 2XL, 3XL

Style # PS-2

Colour: Black, Grey, Navy

Women's sizes: XS, S, M, L, XL, 2XL

Style # PS-2W

Colour: Black, Grey, Navy

MEN'S LONG SLEEVE SHIRT - \$17.95



100% Preshrunk cotton jersey 10.1 oz. Double needle topstitched neckline. Taped neck and shoulders. Double stitched waist hem. Quarter turned body. (ash grey 1% polyester, sport grey 10% polyester, dark heather/safety green/safety orange 50% polyester).

Adult sizes: S, M, L, XL, 2XL, 3XL, 4XL, 5XL

Style # 2400 Gildan

Colour: Black, charcoal, forest green, white, Navy

MEN'S HEAVYWEIGHT LONG SLEEVE "COTTON" SHIRT - \$19.95



100% Cotton preshrunk jersey 8.9oz. Double-needle collar and bottom hem. Taped neck and shoulders. Quarter-turned body. (sport grey 10% polyester).

Adult sizes: S, M, L, XL, 2XL, 3XL

Style # 5400 Gildan

Colour: Black, graphite heather, Navy

MEN'S PERFORMANCE LONG SLEEVE SHIRT - \$24.95



100% Polyester Jersey knit, 7.6 oz. Adult L/S Performance, AquaFX Wicking properties, Freshcare anti-microbial heat transfer label. No fabric softner.

Adult sizes: S, M, L, XL, 2XL

Style # 42400 Gildan

Colour: Black, charcoal, forest green, navy

CAPULIN LONG SLEEVE SHIRT (HARD WEARING SHIRT) - \$29.95



Our blended dress shirt is designed for ease of movement and superior fit. The lightweight fabric provides ease of care. The shirt is also preshrunk to fit today's busy lifestyles. FABRIC: 65% Polyester/35% Cotton. 150 g/m² (4.4 oz/yd²).

Adult sizes: S, M, L, XL, 2XL, 3XL, 4XL, 5XL

Style # M97735

Colour: Woodland Green, Grey, Black

TULARE OXFORD LONG SLEEVE SHIRT - \$39.95



This classic long-sleeve shirt with button-down collar is tailored with a pearlized button placket and features an upper patch pocket and left chest pocket with hidden utility loops. Double pleats at upper back for a looser fit. FABRIC: 55% Cotton 45% Polyester cross dyed oxford with wrinkle resistant finish. 125 g/m² (6.2 oz/linear yd).

Adult sizes: S, M, L, XL, 2XL, 3XL, 4XL, 5XL

Style # M17731

Colour: White, Oxford Grey

LADIES MILANO CARDIGAN - \$59.99



50% Pre-Shrunk Wool, 50% Acrylic - 12 Gauge

Machine washable on wool setting

Longer hip length with matching ribbed sleeve and hem detail, slim-line, button through placket

Women's sizes: XS, S, M, L, XL, 2XL, 3XL

Style # LC417L

Colour: Black, Grey

LADIES MILANO CARDIGAN - \$49.95



73% Viscose, 27% Nylon - 12 Gauge
Full open 2 way zipper
Modern fashion styling

Women's sizes: S, M, L, XL, 2XL, 3XL, 4XL
Style # LC3505
Colour: Black, Grey

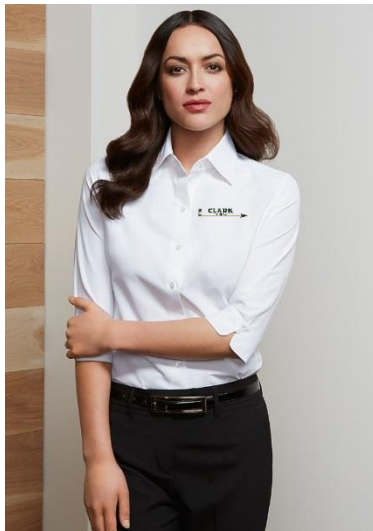
LADIES V-NECK PULLOVER - \$44.95



73% Viscose, 27% Nylon - 12 Gauge
Ribbed "V" neckline, armhole/cuffs and hem
Machine washable

Women's sizes: S, M, L, XL, 2XL, 3XL, 4XL
Style # LP3506
Colour: Black, Grey

LADIES AMBASSADOR 3/4 SLEEVE SHIRT - \$34.95



Easy care 75% Polyester, 25% Cotton
Yarn dyed stripe
Easy iron and shrink resistant
UPF rating - Excellent
Side panels for better fit with bust darts for added shape
2 Button collar and 2 vertical buttons on cuff
Rounded cuff

Women's sizes: 2, 4, 6, 8, 10, 12, 14, 16, 18, 20

Style # S29521

Colour: White, Silver Grey, Blue, Green

LADIES AMBASSADOR 3/4 SLEEVE SHIRT - \$34.95



Easy Care, easy iron, 65% Polyester, 35% Cotton
Self stripe pattern adds understated elegance
Unique cut-away V-neckline with concealed button down collar

Women's sizes: 2, 4, 6, 8, 10, 12, 14, 16, 18, 20

Style # S312LT

Colour: White, Black, Blue

STORMTECH MEN'S RANGER BONDED SHELL - \$139.99



CLIMATE RANGE
COLD
0°C TO -15°C
32°F TO 5°F



WATER PROOF
LEVEL **2**
HIGH RESISTANCE
5,000mm
BREATHABILITY
5,000g/m²

TECHNICAL
OUTERWEAR

Hard-wearing, abrasion-resistant, polyester tussor outer shell bonded with microfleece and treated with H2XTREME® coating for long-lasting weatherproof protection.

- STORMTECH H2XTREME® 5,000/5,000 Waterproof/Breathable Outer Shell
- Reverse-Taped Center Front Zipper
- Self-Fabric Adjustable Cuff Tabs
- Adjustable Hem, Dropped Back
- Set-In Sleeves, Removable Hood
- Brushed Tricot Hand Warmer Pockets, Zippered Pockets
- Short Reflective Piping Along Front and Back Yoke
- Internal Full-Length Stormflap, Internal Media Port
- 100% Polyester Tussor HD Bonded with 100% Polyester Fleece
- 10.91oz. (USA) / 370g (CDN)

Men's sizes: XS, S, M, L, XL, 2XL, 3XL, 4XL, 5XL

Style # XWB-2

Colour: Black

STORMTECH CREW BONDED SHELL - \$89.99

Men's



Women's



Two-tone bonded sport softshell with microfleece lining, designed to maximize comfort and mobility with interior storm placket, chest pocket, and a water repellent DuPont Teflon® finish for lasting weatherproof protection.

- Teflon® Wind / Water Repellent
- Mid-Length Jacket
- Vertical Chest Zippered Pocket with Double Welt
- Stand-Up Collar
- Open Hem with Drawcord
- On-Seam Side Zipper Pockets with Double Welt
- Internal Full-Length Stormflap
- 92% Polyester, 8% Spandex, Bonded with 100% Polyester Microfleece, 10.03oz. (USA) / 340g (CDN), Teflon® Finish

Men's sizes: XS, S, M, L, XL, 2XL, 3XL, 4XL, 5XL

Style # CXJ-1

Colour: Black

Women's sizes: XS, S, M, L, XL, 2XL

Style # CXJ-1W

Colour: Black

Carhartt Firm Duck Double-Front Work Dungaree - \$69.99



12-ounce, firm-hand, 100% cotton ring-spun duck. Sits above the waist. Full seat and thigh. Double front with cleanout openings that accommodate knee pads. Multiple tool and utility pockets. Left-leg hammer loop. Stronger sewn-on-seam belt loops. Heavy hauling reinforced back pockets. Straight leg opening.

Men's sizes: Waist 28-50, Length 30-36

Style # B01

Colour: Black, Moss, Gravel

Carhartt Flex 11" Relaxed Fit Work Short - \$34.99



- Sits slightly below waist, extra room in seat and thigh
- 7.25 oz. Mechanical Stretch Twill, 65% Polyester/35% Cotton
- This comfortable short is ready for any task

Men's sizes: Waist 30-42

Style # WR852

Colour: Black

NEW ERA STRUCTURED STRETCH COTTON CAP - \$17.95



- 97/3 cotton/spandex twill
- 6-panel
- Mid profile
- Structured
- Fitted
- Stretch

Adult sizes: **S/M** (6 7/8 to 7 1/4), **M/L** (7 1/8 to 7 5/8), **L/XL** (7 1/2 to 8)

Style # NE100

Colour: Black, Grey, Forest Green

NEW ERA® ADJUSTABLE STRUCTURED CAP - \$13.95



- 100% cotton twill
- 6-panel
- Adjustable closure
- Mid profile
- Structured

Adult sizes: One size fits all
Style # NE200
Colour: Black, Grey

MATRIX VINTAGE BALLCAP - \$15.50



With a distinctive mesh back and contrast stitching, the Matrix has a trendy vintage look.

FEATURES:

- Pro Fit
- Self fabric strap velcro closure with rubber logo tab
- Semi-structured crown
- Pre-curved peak
- Embroidered eyelets
- Contrast stitching
- Interior crown logo tape

Adult sizes: One Size fits all
Style # 32011
Colour: Pine Green/White

ATC KNIT TOQUE - \$7.95



- 100% acrylic
- 3" folding cuff

Adult sizes: One size fits all
Style # C100
Colour: Black, Grey, Forest Green

Longer Length Knit Scarf - \$12.95



- 100% acrylic
- Tubular knit construction for extra warmth
- Tonal cover stitch edge finish
- ATC woven flag label with tear-away care label
- 9" x 72"

Adult sizes: One size fits all

Style # F1001

Colour: Black, Grey

PIONEER HI-VIS SAFETY VEST - \$32.95



This Pioneer high visibility safety vest meets CSA standards with super-sized 3M Scotchlite reflective tape. The vest features a transparent ID pocket and penholders, a sleeve for your cell phone and three storage pockets for your work essentials. Two radiophone clip straps can carry your two-way radio or any other small tools you may need while on the job.

- Tricot polyester interlock
- ID pocket with pen holders
- 3 Storage pockets
- Cell phone pocket
- 2 Radiophone clip straps
- 3M Scotchlite reflective tape
- Adjustable 1 size up at sides
- Meets CSA Z96-09 Class 1 Level 2 standards
- Machine wash cold water, tumble dry low
- Do not dry clean, iron, or bleach

Adult sizes: S/M, L/XL, 2XL/3XL, 4XL/5XL

Style # 135-01

Colour: Black